



ROTARY SOLUTIONS › MACHINE TOOLS & METROLOGY

NEW

## Production System CARIBU

### Headquarters

PETER LEHMANN AG  
Bäraustrasse 43  
CH-3552 Bärau  
Phone +41 (0)34 409 66 66  
sales@plehmann.com  
www.lehmann-rotary-tables.com

### Global network

#### Europe

– Austria  
– Benelux  
– Bosnia  
– Bulgaria  
– Croatia  
– Czech Republic  
– Denmark  
– Estonia  
– Finland  
– France  
– Germany  
– Hungary  
– Iceland  
– Ireland  
– Italy  
– Kosovo

– Latvia  
– Lithuania  
– Macedonia  
– Norway  
– Poland  
– Portugal  
– Romania  
– Russia  
– Serbia  
– Slovakia  
– Slovenia  
– Spain  
– Sweden  
– Turkey  
– UK

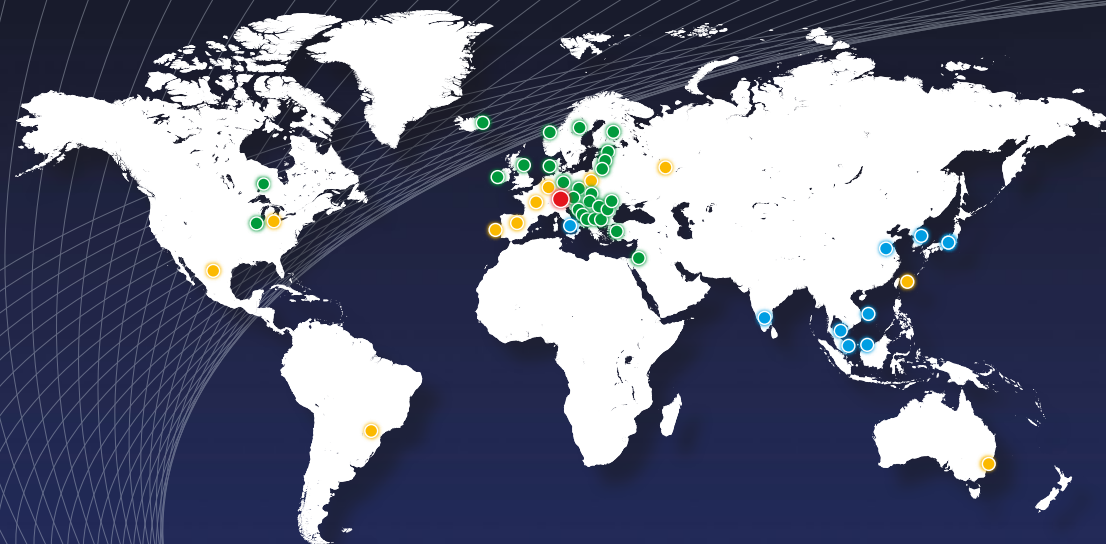
#### America

– Brazil  
– Canada  
– Mexico  
– USA

#### Asia

– China  
– India  
– Israel  
– Japan  
– Malaysia  
– Singapore  
– South Korea  
– Taiwan  
– Thailand  
– Vietnam

#### Australia



● Headquarters ● direct sales ● pL SOLUTIONS® partner ● value added reseller & partner  
More information (address, telephone number...) at [www.lehmann-rotary-tables.com](http://www.lehmann-rotary-tables.com)

Subject to change / Edition: 08/2025

## Smart Solution

We support you

# 2025

brother  
● ● ● ZERO CLAMP®  
Precision erleben

08/2025 | EN

The fast endurance runner  
for chaotic production 24/7 –  
save € 120,000 annually with  
an hourly rate of only € 15

Compared to Horizontal MC with Pallet Pool

- 50 % lower investment
- 60 % lower hourly rate
- 70 % less energy consumption





The fast endurance runner for chaotic production **24/7**

Practical example: annual savings of **€ 120,000**  
with an hourly rate of **only € 15**

### Brother W1000Xd2

- Tool magazin 14 / 21 / 28
- Chip to chip time 1.3 / 1.3 / 1.4 s
- Speed 50 / 50 / 56 m/min (XYZ)
- Spindle speed 10'000...16'000 min<sup>-1</sup>

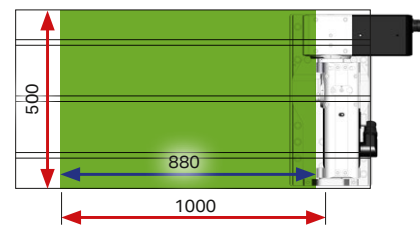
### 5AX machining with pL LEHMANN TAP1

(4 axis simultaneous operation possible)

- Workpiece upto Ø 280 x 200 mm
- ultra short cycle time
  - Rotary axis (4th) 90° 0.22 s 180° 0.33 s
  - Tilting axis (5th) 0.44 s 0.69 s
- Large selection of workpiece clamping systems
  - Standardized
  - Simple to automatic hybrid solutions (Combination of workpiece and zero point handling)

### 3AX machining

- Workpieces up to X: 1'000 x Y: 500 x Z: 430 (Tool length max. 100 mm)
- Additional, also if rotary table is still mounted



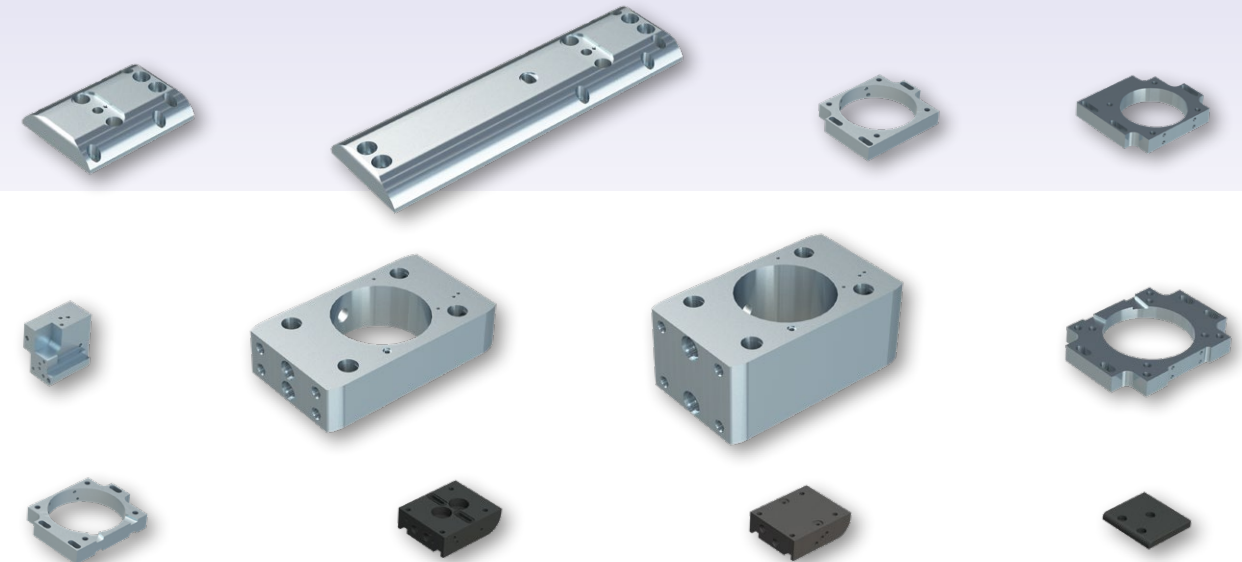
### Automation ZEROBOT 100V

- High lifting force up to 100 kg
- With crane modus up to 100 kg
- Auto gripper exchange
- High range up to ca. 1m
- Very compact: 2.9 m<sup>2</sup>
- Workpiece size up to 330 x 330 mm
- Workpiece weight = max. lifting force minus gripper weight

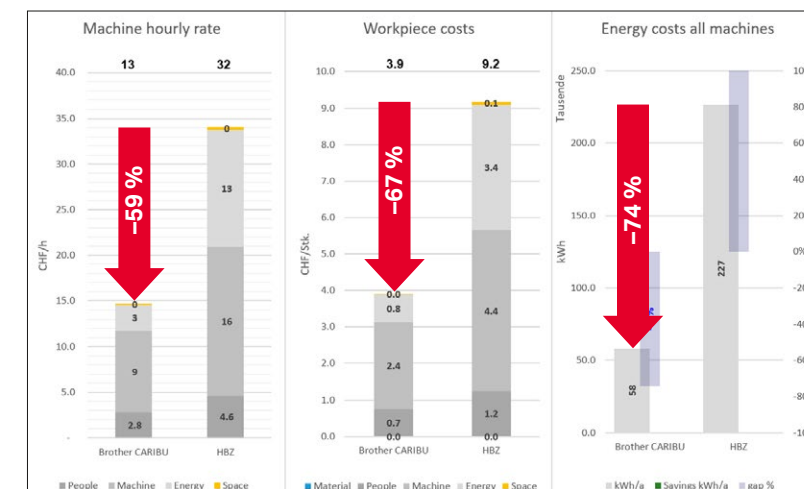


Chaotic manufacturing in practice:

12 different workpieces in continuous operation  
(Equipment for the EMO 2025)



### Benchmark to horizontal machining center with pallet pool



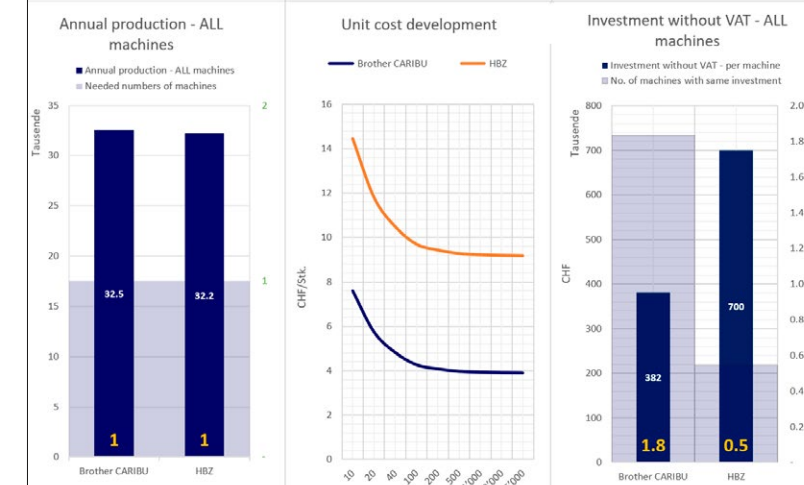
### Machining forces



Tapping  
M33 x 3.5 mm in steel



Facing  
303 cm³ / min in steel



With our eVestor we create **your** profitability calculation.  
Ask us.